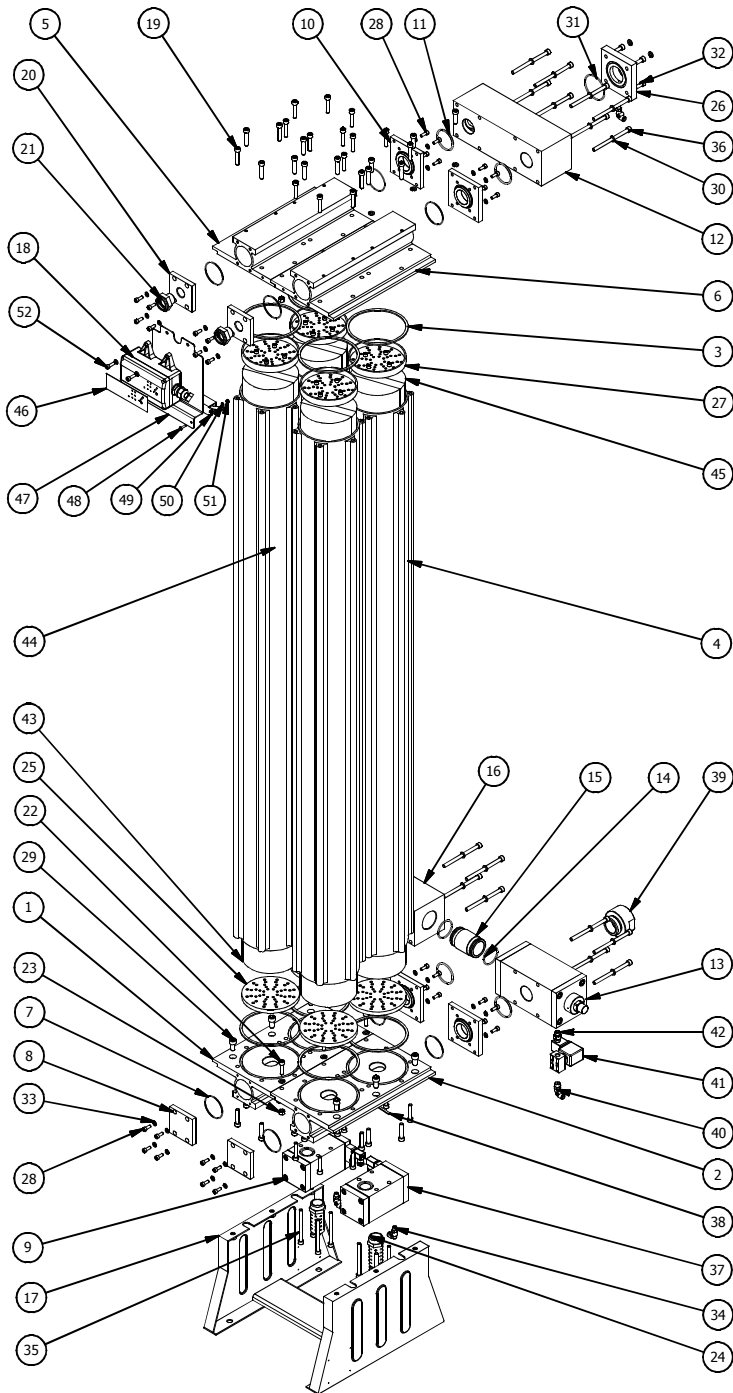


# DRYSPELL PLUS 275 EXPLODED VIEW

## Drw. No.PD212



PARTS LIST				PARTS LIST			
ITEM	QTY	PART NUMBER	DESCRIPTION	ITEM	QTY	PART NUMBER	DESCRIPTION
1	1	AD1547	BOTTOM CHAMBER LEFT	27	4	AD642	TOP COMPACTOR PLATE
2	1	AD1548	BOTTOM CHAMBER RIGHT	28	32	CF201	SOC. HD. CAP SCREW M6 x 16
3	8	CD192	DRYING TOWER GASKET	29	6	CF248	SOC. HD. CAP SCREW M10 X 20
4	4	AD1488	DRYING TOWER DRYSPELL PLUS 125	30	26	CF189	SPRING WASHER M8
5	1	AD1549	TOP CHAMBER LEFT	31	1	CO125	O-Ring 62 x 3.0
6	1	AD1550	TOP CHAMBER RIGHT	32	4	CF106	SOC. HD. CAP SCREW M8 X 20
7	8	CO187	O-RING (56 X 2.0)	33	34	CF090	SPRING WASHER M6
8	2	AD1533	END COVER BOTTOM	34	5	AC126	ONE TOUCH ELBOW 1/8" MALE
9	1	AD1542	EXHAUST VALVE ASSY LEFT	35	8	CF247	SOC. HD. CAP SCREW M8 X 90
10	4	AD1551	CONNECTOR PLATE	36	16	CF259	SOC. HD. CAP SCREW M8 X 115
11	4	CO126	O-Ring 49 X 3.53	37	1	AD1541	EXHAUST VALVE ASSY RIGHT
12	1	AD1450	SHUTTLE VALVE ASSY DRYSPELL PLUS 250	38	1	AD224	ONE TOUCH TUBE
13	1	AD1564	INLET VALVE ASSY 1 1/2"	39	1	AD1563	INLET CONNECTOR 1 1/2" NPT
14	2	CO124	O-RING 42.5 X 3.0	40	1	AC011	ONE TOUCH ELBOW 1/4" MALE
15	1	AD1553	CONNECTING BUSH	41	1	CC021	CONNECTOR 1/4" TO 1/4"
16	1	AD1552	CONNECTOR	42	1	AD614	SOLENOID VALVE 24V
17	1	AD1554	ASSY MOUNTING BRACKET DPS 150 - 200	43	12	AD1398	ACTIVATED ALUMINA BAG
18	1	AD1671	CONTROLLER UL WITH SMPS (MOEDL.DS31-200)	44	4	AD1452	DESICCANT + MOLECULAR SLEEVES BAG
19	48	CF141	SOC. HD. CAP SCREW M8 X 40	45	4	AD1424	MOLECULAR SIEVES BAG
20	2	AD1534	END COVER TOP	46	1	CP362	DISPLAY STICKER UL DS31-200
21	2	AD925	HUMIDITY INDICATOR	47	1	AD1674	MOUNTING BRACKET DRYSPELL CONTROLLER WITH SMPS
22	6	CF103	SOC. HD. CAP SCREW M8 x 30	48	2	CF246	STAR HEAD CAP SCREW M4 X 16 (SS)
23	6	CF250	HEX NUT M8	49	1	CE659	SMPS 24V DC
24	2	AD658	MUFFLER ASSY. 1"	50	2	CF325	PLATE WASHER M4 (SS)
25	4	CD670	BOTTOM DIFFUSER	51	2	CF348	NUT HEX M4 (SS)
26	1	AD1557	OUTLET CONNECTOR 1 1/2" NPT	52	2	CF175	SOC. HD. CAP SCREW M6 X 20 (SS)

### SPARE KIT

6	AS697	FILTER ELEMENT ASSEMBLY T600Y	CO200	O-RING (78 X 3.0)	2
			CD943	SEAL RUBBER	1
			AC147	FILTER ELEMENT T600Y	1
5	SK275A	DESICCANT WITH SEAL KIT - DRYSPELL PLUS 250	SK243A	SEALS AND O-RING SPARE KIT DRYSPELL PLUS - 200 & 250	1
			AD642	TOP COMPACTOR PLATE	4
			AD641	BOTTOM DIFFUSER	4
			AD1398	ACTIVATED ALUMINA BAG	12
			AD1425	ACTIVATED ALUMINA + MOLECULAR SIEVES BAG	4
			AD1424	MOLECULAR SIEVES BAG	4
			CO123	O-RING (66.03 X 3.53)	3
4	SK269A	SHUTTLE VALVE ASSY SPARE KIT - DRYSPELL PLUS 250	CC366	CIRCLIP B-75	1
			AD1448	TOP SHUTTLE	1
			AD1090	POPPET MOULDED	1
			CO128	O-RING (65 X 3.0)	1
3	SK244A	INLET VALVE ASSY SPARE KIT 1 1/2"	AD1095	SPRING COMP.	1
			CO122	O-RING (69.4 X 5.33)	1
			CO118	O-RING (7.6 X 2.4)	2
			CO119	O-RING (12.3 X 2.4)	1
			CO120	U-RING	1
			CO121	O-RING (37.9 x 3.53)	1
			CD193A	GASKET NON-METAL	4
			CC302	SEAL RING	2
2	SK239A	EXHAUST VALVE SPARE KIT DPS-100	AD637	SPRING COMP	2
			CO042	O-RING (18.72 X 3.53)	2
			CO041	O-RING (47.2 X 5.33)	2
			CO118	O-RING (7.6 X 2.4)	2
			CO009	O-RING (31.6 X 2.4)	2
			CD192	DRYING TOWER GASKET	8
1	SK243A	SEALS AND O-RING SPARE KIT DRYSPELL PLUS 200 & 250	CO125	O-RING (62 X 3.0)	1
			CO187	O-RING (56 X 2.0)	8
			CO126	O-RING (49 X 3.53)	4
			CO124	O-RING (42.5 X 3.0)	2
SL NO.	PART NUMBER	DESCRIPTION	SPARE KIT CONSISTING OF		