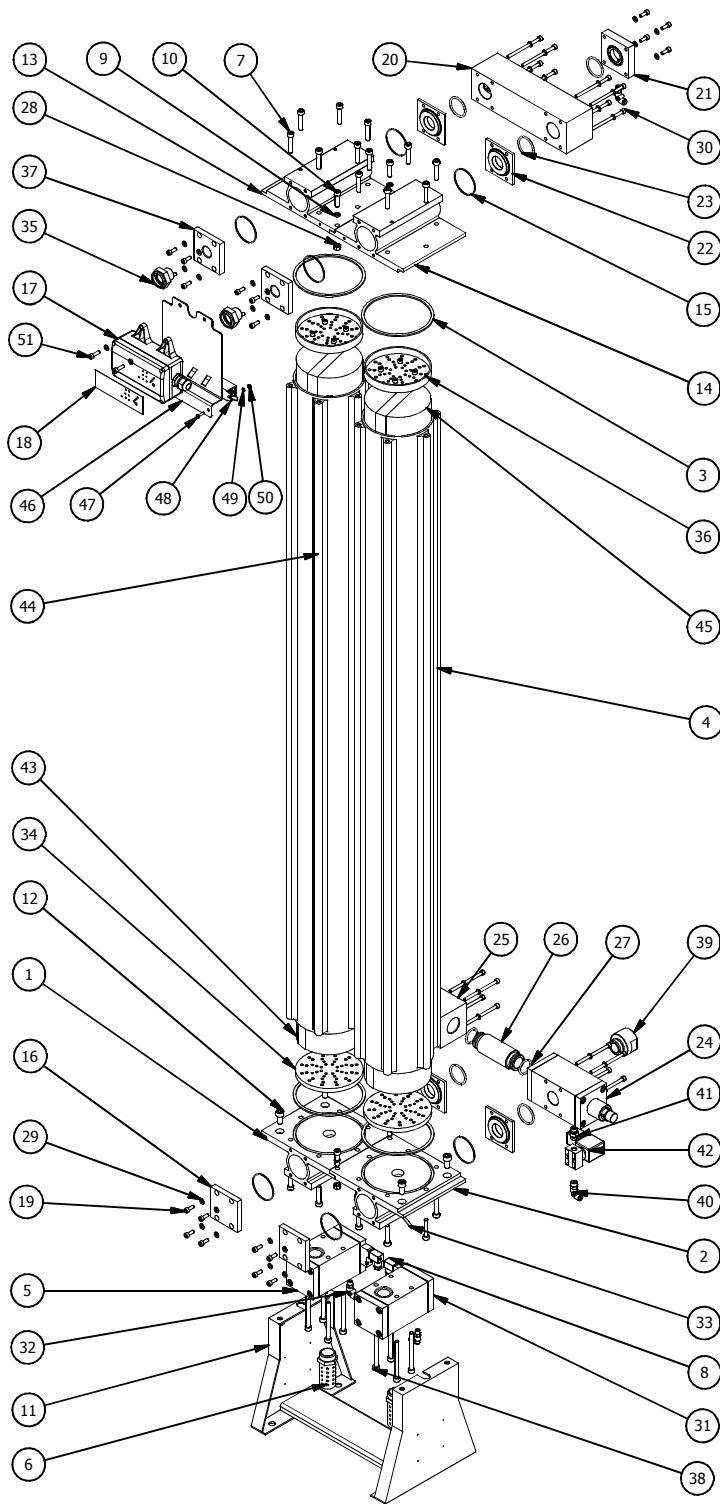


DRYSPELL PLUS 125 EXPLODED VIEW

Drw. No.PD210



PARTS LIST				PARTS LIST			
ITEM	QTY	PART NUMBER	DESCRIPTION	ITEM	QTY	PART NUMBER	DESCRIPTION
1	1	AD1524	BOTTOM CHAMBER LEFT	27	2	CO002	O-RING 28.17 X 3.53
2	1	AD1524	BOTTOM CHAMBER RIGHT	28	4	CF250	HEX NUT M8
3	4	CD192	DRYING TOWER GASKET	29	38	CF090	SPRING WASHER M6
4	2	AD1488	DRYING TOWER DRYSPELL PLUS 125	30	16	CF258	SOC. HD. CAP SCREW M6 X 90
5	1	AD1542	EXHAUST VALVE ASSY LEFT	31	1	AD1541	EXHAUST VALVE ASSY RIGHT
6	2	AD658	MUFFLER ASSY. 1"	32	5	AC115	ONE TOUCH ELBOW 1/8" MALE
7	24	CF141	SOC. HD. CAP SCREW M8 X 40	33	1	AD224	ONE TOUCH TUBE
8	2	AS079	SOLENOID VALVE ASSY	34	2	AD641	BOTTOM DIFFUSER
9	4	CF189	SPRING WASHER M8	35	2	AD925	HUMIDITY INDICATOR
10	4	CF103	SOC. HD. CAP SCREW M8 X 30	36	2	AD642	TOP COMPACTOR PLATE
11	1	AD1528	ASSY MOUNTING BRACKET DPS 100	37	2	AD1534	END COVER TOP
12	4	CF248	SOC. HD. CAP SCREW M10 X 20	38	8	CF247	SOC. HD. CAP SCREW M8 X 90
13	1	AD1522	TOP CHAMBER LEFT	39	1	AD1539	INLET CONNECTOR 1" NPT
14	1	AD1523	TOP CHAMBER RIGHT	40	1	AC011	ONE TOUCH ELBOW 1/4" MALE
15	8	CO187	O-RING (56 X 2.0)	41	1	CC021	CONNECTOR 1/4" TO 1/4
16	2	AD1533	END COVER BOTTOM	42	1	AD614	24V SOLENOID VALVE
17	1	AD1671	CONTROLLER UL WITH SMPs (MODEL DS31-200)	43	6	AD1398	ACTIVATED ALUMINA BAG
18	1	CP362	DISPLAY STICKER UL DS31-200	44	2	AD1425	DESICCANT + MOLECULAR SLEEVES BAG
19	20	CF201	SOC. HD. CAP SCREW M6 X 16	45	2	AD1424	MOLECULAR SIEVES BAG
20	1	AD1460	SHUTTLE VALVE ASSY. DRYSPELL PLUS 125	46	1	AD1674	MOUNTING BRACKET DRYSPELL CONTROLLER WITH SMPs
21	1	AD1530	OUTLET COVER 1" NPT	47	2	CF246	STAR HEAD CAP SCREW M4 X 16 (SS)
22	4	AD1531	CONNECTOR PLATE	48	1	CE659	SMPs 24V DC
23	5	CO054	O-RING 38.5 X 3.53	49	2	CF325	PLATE WASHER M4 (SS)
24	1	AD1540	INLET VALVE ASSY 1"	50	2	CF348	NUT HEX M4 (SS)
25	1	AD1527	CONNECTOR	51	2	CF0	SOC. HD. CAP SCREW M6 X 20 (SS)
26	1	AD1526	CONNECTING BUSH				

SPARE KIT

6	AS693	FILTER ELEMENT ASSEMBLY T250Y	CO200	O-RING (78 X 3.0)	2
			CD943	SEAL RUBBER	1
			AC143	FILTER ELEMENT T250Y	1
			SK238A	SEALS AND O-RING SPARE KIT DPS-100	1
5	SK273A	DESICCANT WITH SEAL KIT - DRYSPELL PLUS 125	AD642	TOP COMPACTOR PLATE	2
			AD641	BOTTOM DIFFUSER	2
			AD1398	ACTIVATED ALUMINA BAG	6
			AD1425	ACTIVATED ALUMINA + MOLECULAR SIEVES BAG	2
			AD1424	MOLECULAR SIEVES BAG	2
			CO054	O-RING (38.5 X 3.53)	3
4	SK267A	SHUTTLE VALVE ASSY SPARE KIT - DRYSPELL PLUS 125	CC301	CIRCLIP B-45	1
			AD1459	TOP SHUTTLE	1
3	SK240A	INLET VALVE ASSY SPARE KIT 1"	AD1059	POPPET MOULDED	1
			CO127	O-RING (48 X 3.0)	1
			AD1063	SPRING COMP.	1
			CO041	O-RING (47.2 X 5.33)	1
			CO118	O-RING (7.6 X 2.4)	2
			CO119	O-RING (12.3 X 2.4)	1
			CO120	U-RING	1
			CO121	O-RING (37.9 X 3.53)	1
			CD193A	GASKET NON-METAL	4
			CC302	SEAL RING	2
2	SK239A	EXHAUST VALVE SPARE KIT DPS-100	AD637	SPRING COMP	2
			CO042	O-RING (18.72 X 3.53)	2
			CO041	O-RING (47.2 X 5.33)	2
			CO118	O-RING (7.6 X 2.4)	2
			CO009	O-RING (31.6 X 2.4)	2
			CD192	DRYING TOWER GASKET	4
1	SK238A	SEALS AND O-RING SPARE KIT DPS-100	CO187	O-RING (56 X 2.0)	8
			CO054	O-RING (38.5 X 3.53)	5
			CO002	O-RING (28.17 X 3.53)	2
SL NO.	PART NUMBER	DESCRIPTION	SPARE KIT CONSISTING OF		