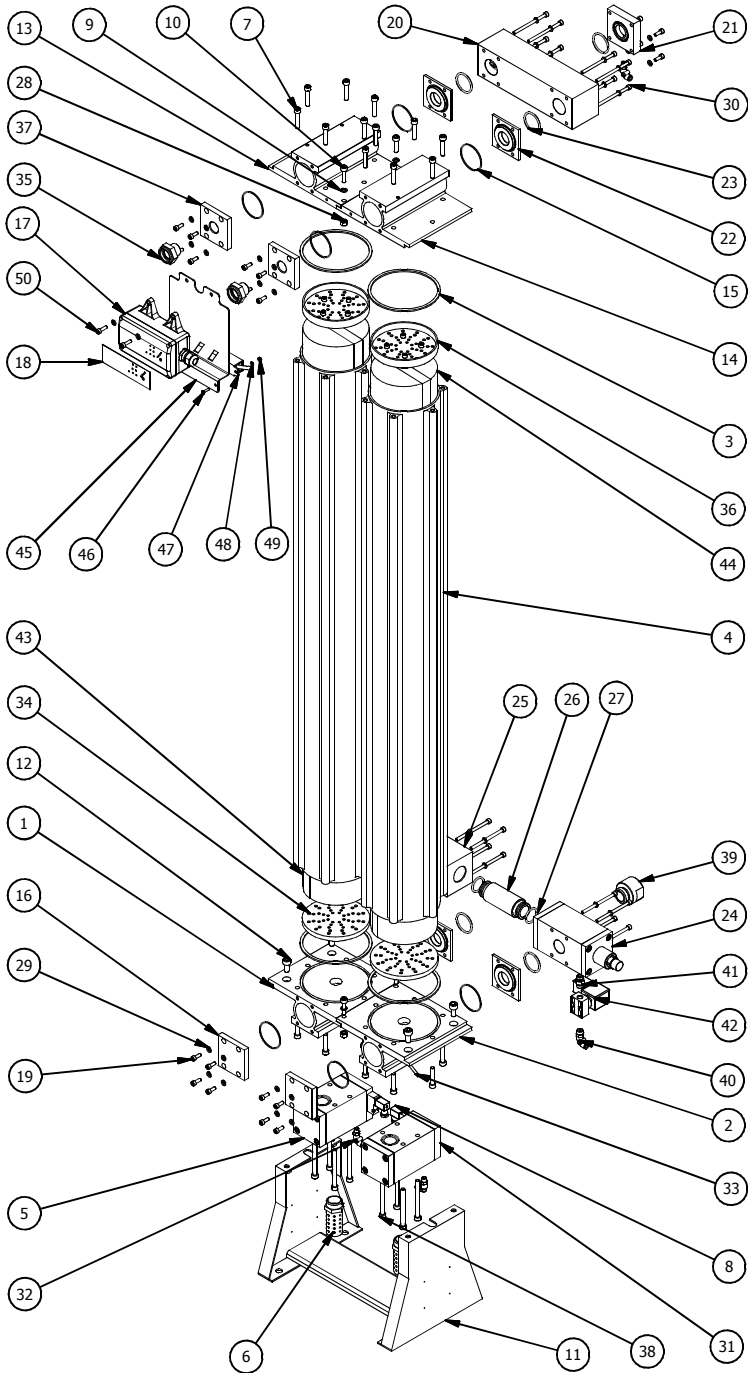


DRYSPELL PLUS 100 EXPLODED VIEW

Drw. No.PD209



PARTS LIST				PARTS LIST			
ITEM	QTY	PART NUMBER	DESCRIPTION	ITEM	QTY	PART NUMBER	DESCRIPTION
1	1	AD1524	BOTTOM CHAMBER LEFT	26	1	AD1526	CONNECTING BUSH
2	1	AD1525	BOTTOM CHAMBER RIGHT	27	2	CO002	O-RING 28.17 X 3.53
3	4	CD192	DRYING TOWER GASKET	28	4	CF250	HEX NUT M8
4	2	AD1487	DRYING TOWER DRYSPELL PLUS 100	29	38	CF090	SPRING WASHER M6
5	1	AD1542	EXHAUST VALVE ASSY LEFT	30	16	CF258	SOC. HD. CAP SCREW M6 X 90
6	2	AD658	MUFFLER ASSY. 1"	31	1	AD1541	EXHAUST VALVE ASSY RIGHT
7	24	CF141	SOC. HD. CAP SCREW M8 X 40	32	5	AC115	ONE TOUCH ELBOW 1/8" MALE
8	2	AS079	SOLENOID VALVE ASSY	33	1	AD224	ONE TOUCH TUBE
9	4	CF189	SPRING WASHER M8	34	2	AD641	BOTTOM DIFFUSER
10	4	CF103	SOC. HD. CAP SCREW M8 X 30	35	2	AD925	HUMIDITY INDICATOR
11	1	AD1528	ASSY MOUNTING BRACKET DPS 100	36	2	AD642	TOP COMPACTOR PLATE
12	4	CF248	SOC. HD. CAP SCREW M10 X 20	37	2	AD1534	END COVER TOP
13	1	AD1522	TOP CHAMBER LEFT	38	8	CF247	SOC. HD. CAP SCREW M8 X 90
14	1	AD1523	TOP CHAMBER RIGHT	39	1	AD1539	INLET CONNECTOR 1" NPT
15	8	CO187	O-RING (56 X 2.0)	40	1	AC011	ONE TOUCH ELBOW 1/4" MALE
16	2	AD1533	END COVER BOTTOM	41	1	CC021	CONNECTOR 1/4" TO 1/4
17	1	AD1671	CONTROLLER UL WITH SMPS (MODEL DS31-200)	42	1	AD614	24V SOLENOID VALVE
18	1	CP362	DISPLAY STICKER UL DS31-200	43	6	AD1398	ACTIVATED ALUMINA BAG
19	20	CF201	SOC. HD. CAP SCREW M6 X 16	44	2	AD1424	MOLECULAR SIEVES BAG
20	1	AD1455	SHUTTLE VALVE ASSY. DRYSPELL PLUS 100	45	1	AD1674	MOUNTING BRACKET DRYSPELL CONTROLLER WITH SMPS
21	1	AD1530	OUTLET COVER 1" NPT	46	2	CF246	STAR HEAD CAP SCREW M4X 16 (SS)
22	4	AD1531	CONNECTOR PLATE	47	1	CE659	SMPS 24V DC
23	5	CO054	O-RING 38.5 X 3.53	48	2	CF325	PLATE WASHER M4 (SS)
24	1	AD1540	INLET VALVE ASSY 1"	49	2	CF348	NUT HEX M4 (SS)
25	1	AD1527	CONNECTOR	50	2	CF175	SOC. HD. CAP SCREW M6 X 20 (SS)

SPARE KIT

6	AS693	FILTER ELEMENT ASSEMBLY T250Y	CO200	O-RING (78 X 3.0)	2
			CD943	SEALS RUBBER	1
			AC143	FILTER ELEMENT T250Y	1
			SK238A	SEALS AND O-RING SPARE KIT DPS-100	1
5	SK272A	DESICCANT WITH SEAL KIT - DRYSPELL PLUS 100	AD642	TOP COMPACTOR PLATE	2
			AD641	BOTTOM DIFFUSER	2
			AD1398	ACTIVATED ALUMINA BAG	6
			AD1424	MOLECULAR SIEVES BAG	2
			CO054	O-RING (38.5 X 3.53)	3
			CC301	CIRCLIP B-45	1
4	SK266A	SHUTTLE VALVE ASSY DRYSPELL PLUS 100	AD1461	TOP SHUTTLE	1
			AD1059	POPPET MOULDED	1
			CO127	O-RING (48 X 3.0)	1
			AD1063	SPRING COMP.	1
3	SK240A	INLET VALVE ASSY SPARE KIT 1"	CO041	O-RING (47.2 X 5.33)	1
			CO118	O-RING (7.6 X 2.4)	2
			CO119	O-RING (12.3 X 2.4)	1
			CO120	U-RING	1
			CO121	O-RING (37.9 X 3.53)	1
			CD193A	GASKET NON-METAL	4
			CC302	SEAL RING	2
			AD637	SPRING COMP	2
2	SK239A	EXHAUST VALVE SPARE KIT DPS-100	CO042	O-RING (18.72 X 3.53)	2
			CO041	O-RING (47.2 X 5.33)	2
			CO118	O-RING (7.6 X 2.4)	2
			CO009	O-RING (31.6 X 2.4)	2
			CD192	DRYING TOWER GASKET	4
1	SK238A	SEALS AND O-RING SPARE KIT DPS-100	CO187	O-RING (56 X 2.0)	8
			CO054	O-RING (38.5 X 3.53)	5
			CO002	O-RING (28.17 X 3.53)	2
			SPARE KIT CONSISTING OF		
SL NO.	PART NUMBER	DESCRIPTION			