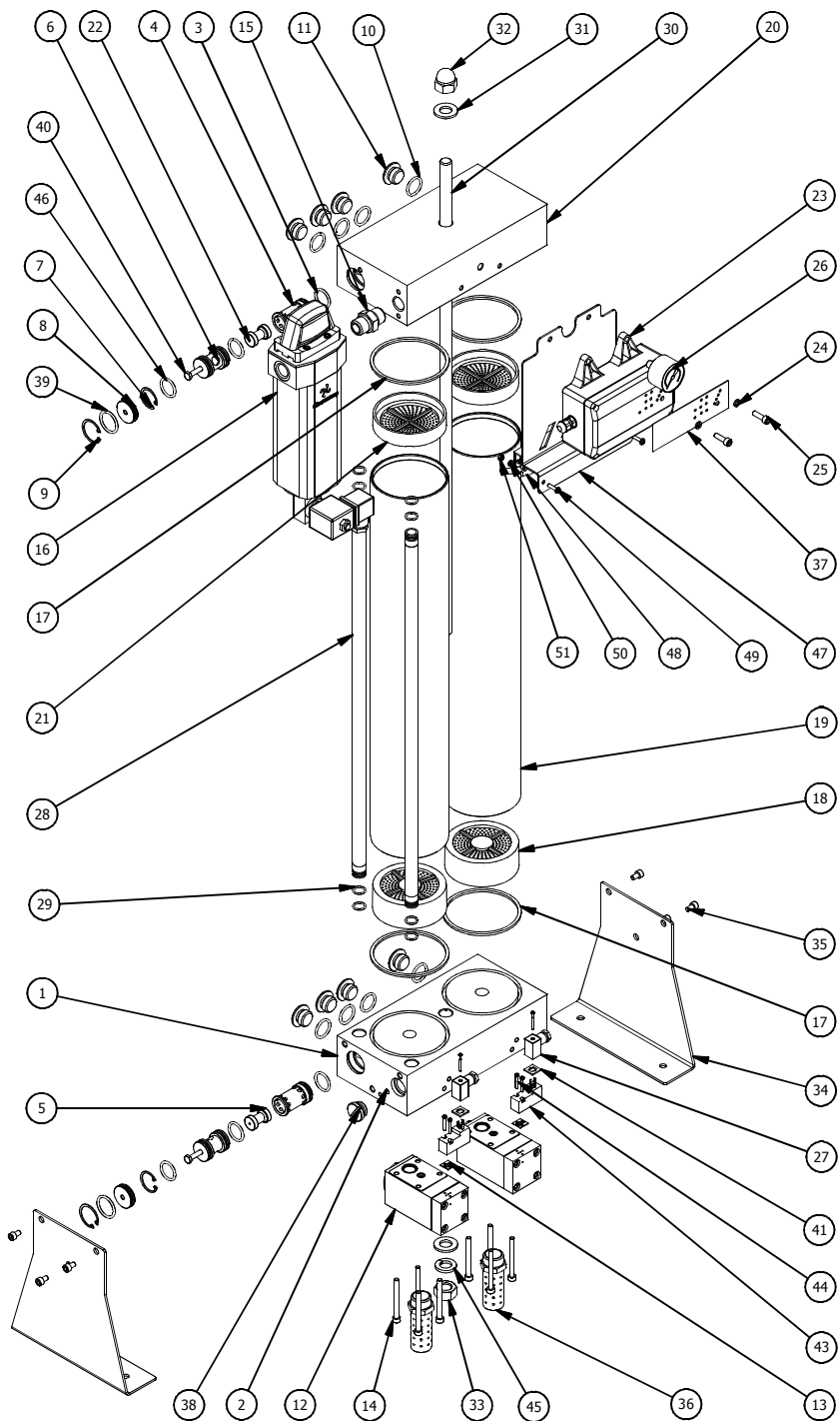


DRYSPELL PLUS 20, 30 EXPLODED VIEW

Drw. No.PD205, PD206



PARTS LIST				PARTS LIST			
ITEM	QTY	PART NUMBER	DESCRIPTION	ITEM	QTY	PART NUMBER	DESCRIPTION
1	1	CD958	BOTTOM BLOCK	26	1	AD1374	PRESSURE GAUGE (1/8" NPT)
2	8	AD176	PLUG PIECE (INVISIBLE)	27	2	CE323	DIN CONNECTOR
3	2	SK211A-8	SHUTTLE GUIDE O-RING (21.92 x 3.0)	28	2	AD1445	INLET AIR TRANSFER TUBE - DRYSPELL PLUS 30 (OR)
4	2	SK211A-7	SHUTTLE GUIDE			AD1434	INLET AIR TRANSFER TUBE - DRYSPELL PLUS 20
5	1	SK211A-6	BOTTOM SHUTTLE	29	8	CO064	O-RING (13 x 2.0)
6	2	SK211A-5	GUIDE BUSH	30	1	AD1444	TIE ROD - DRYSPELL 30 (OR)
7	2	SK211A-3	GUIDE BUSH CIRCLIP			AD1433	TIE ROD - DRYSPELL 20
8	2	SK211A-2	END BUSH	31	2	CD114	WASHER
9	2	SK211A-1	END BUSH CIRCLIP	32	1	CD113	DOOM NUT
10	8	SK211A-12	PLUG MACHINED O-RING - 1 (21.5 x 3.0)	33	1	CD108	NUT MACHINED
11	8	SK211A-11	PLUG MACHINED - 1	34	2	AD1579	LEGS KIT - LEGS, SCREWS
12	2	AD1516	EXHAUST VALVE ASSEMBLY	35	6	CF020	SOCKET HEAD CAP SCREW (M8 x 10)
13	2	AS079A	SOLENOID VALVE GASKET PAD	36	2	AD651	MUFFLER
14	8	CF200	SOCKET HEAD CAP SCREW M6 x 60	37	1	CP361	DISPLAY STICKER - UL (MODEL DS31-90)
15	1	AD4343	CONNECTOR 1/2" NPT	38	1	AD241	PLUG MACHINED
16	1	PF157	CLEANSWEEP T100 Y EA	39	2	SK211A-15	END BUSH O-RING (26.5 x 3.0)
17	4	SK215A-2	TOWER GASKET	40	2	SK211A-14	HEX SCREW (M6 x 35)
18	2	DP 005 S	DIFFUSER SCREEN	41	2	CE417A	DINCONNECTOR GASKET
19	2	AD1446	TOWER PIPE - DRYSPELL PLUS 30 (OR)	42	2	CO098	ADAPTOR O-RING (21.5 X 1.78) (NOT SHOWN)
		AD1435	TOWER PIPE - DRYSPELL PLUS 20	43	2	AS079	SOLENOID VALVE 24V DC
20	1	CD960	TOP BLOCK	44	4	CF193	CHEESE HEAD SCREW M3 X 20
21	2	AD828	TOP DIFFUSER SCREEN	45	1	CF225	SPRING WASHER M16
22	1	SK257A	TOP SHUTTLE - DRYSPELL PLUS 30 (OR)	46	4	SK211A-4	GUIDE BUSH O-RING (21.92 x 3.0)
		SK256A	TOP SHUTTLE - DRYSPELL PLUS 20	47	1	AD1674	MOUNTING BRACKET DRYSPELL CONTROLLER WITH SMPS
23	1	AD1670	CONTROLLER UL WITH SMPS (MODEL DS31-90)	48	1	CE659	SMPS 24V DC
24	2	CF090	SPRING WASHER M6	49	2	CF246	STAR HEAD CAP SCREW M4 x 16 - SS
25	2	CF201	SOCKET HEAD CAP SCREW M6 X 16	50	2	CF325	PLATE WASHER M4 - SS
				51	2	CF348	NUT HEX M4 - SS

SPARE KIT

4	AS701	FILTER ELEMENT ASSEMBLY T100Y	CO201	O-RING (62 X 2.4)	2
			CD944	SEAL RUBBER	1
			AC151	FILTER ELEMENT T100Y	1
3	SK280A SK279A	DESICCANT WITH SEAL KIT - DRYSPELL PLUS 30 DESICCANT WITH SEAL KIT - DRYSPELL PLUS 20	SK282A	SEALS AND O-RING SPARE KIT - DRYSPELL PLUS 30 (OR)	1
			SK281A	SEALS AND O-RING SPARE KIT - DRYSPELL PLUS 20	1
			AD828	TOP DIFFUSER SCREEN	2
			DP 005 S	DIFFUSER SCREEN	2
			CD067A	ACTIVATED ALUMINA - DRYSPELL PLUS 30 (OR) ACTIVATED ALUMINA - DRYSPELL PLUS 20	6.4 kgs 4.2 kgs
2	SK 222 A	EXHAUST VALVE SPARE KIT DPS-20, 30 & 45	CC447	MOLECULAR SIEVES - DRYSPELL PLUS 30 MOLECULAR SIEVES - DRYSPELL PLUS 20	2.2 kgs 1.4 kgs
			CO002	PISTON O-RING-2 (28.17 X 3.53)	2
			CO067	PISTON O-RING -1 (10 X 2.62)	2
			CO009	PLUG O-RING (31.6 X 2.4)	2
			AD745	POPPET ASSY	2
			AD548	SPRING COMP.	2
			CD116	GASKET RUBBER	2
1	SK282A SK281A	SEALS AND O-RING SPARE KIT - DRYSPELL PLUS 30 SEALS AND O-RING SPARE KIT - DRYSPELL PLUS 20	AG012	GASKET	2
			CO064	O-RING-2 (13.0 x 2.0)	8
			-----	-----	-----
			SK211A-12	PLUG MACHINED O-RING-1(21.5 x 3.0)	8
			SK211A-8	SHUTTLE GUIDE O-RING (21.92 X 3.0)	2
			SK211A-15	END BUSH O-RING (26.5 x 3.0)	2
			SK211A-4	GUIDE BUSH O-RING (21.92 x 3.0)	4
			SK211A-1	END BUSH CIRCLIP	2
			SK211A-3	GUIDE BUSH CIRCLIP	2
			SK215A-2	TOWER GASKET	4
SK211A-6	BOTTOM SHUTTLE	1			
SK257A SK256A	TOP SHUTTLE - DRYSPELL PLUS 30 (OR) TOP SHUTTLE - DRYSPELL PLUS 20	1			
ITEM	PART NUMBER	DESCRIPTION	SPARE KIT CONSISTING OF		