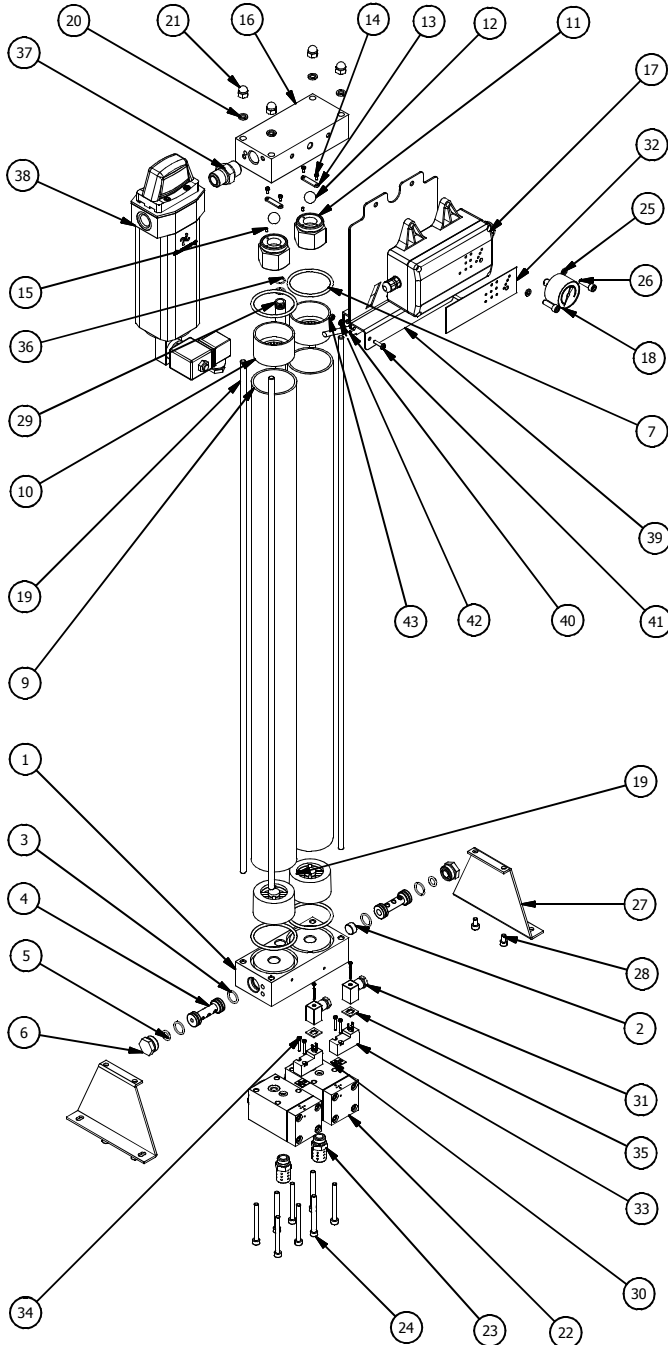


DRYSPELL PLUS 10 EXPLODED VIEW

Drw. No.PD204



PARTS LIST				PARTS LIST			
ITEM	QTY	PART NUMBER	DISCRIPTION	ITEM	QTY	PART NUMBER	DESCRIPTION
1	1	CD961	BOTTOM BLOCK	23	2	DP 956 A	MUFFLER
2	1	SK212A-3	SHUTTLE	24	8	CF200	SOCKET HEAD CAP SCREW M6 X 60
3	4	SK210A-2	CHAMBER BOTTOM NOZZLE O-RING (15.4 X 2.21)	25	2	CF090	SPRING WASHER M6
4	2	SK212A-2	CHAMBER BOTTOM NOZZLE	26	2	CF175	SOCKET HEAD CAP SCREW M6 X 20
5	2	SK210A-1	CHAMBER BASE PLUG O-RING (10 X 2.62)	27	2	AD1521	LEGS KIT
6	2	SK212A-1	CHAMBER BASE PLUG	28	4	CF202	SOCKET HEAD CAP SCREW M6 X 10
7	4	SK212A-4	TOWER SEAL (O-RING 55.4 X 4)	29	1	AD1429	INLET AIR TRANSFER TUBE
8	2	DP 072 S-1	DIFFUSER SCREEN	30	2	AS079A	SOLENOID VALVE GASKET PAD
9	2	AD1430	TOWER PIPE (DRYSPELL 10+10)	31	2	CE417	DIN CONNECTOR
10	2	AD827	TOP NYLON DIFFUSER	32	1	CP276	DISPLY STICKER
11	2	DP 072 S-3	DIFFUSER CONNECTOR	33	2	AS079	SOLENOID VALVE
12	2	AD259	RUBBER BALL	34	4	CF193	CHEESE HEAD SCREW M3 X 20
13	2	CD658	NRV PLATE	35	2	CE417A	DIN CONNECTOR GASKET
14	4	CF170	CHEESE HEAD SCREW M3 X 6	36	4	SK210A-3	INLET AIR TRANSFER TUBE O-RING (10.6 X 1.83)
15	2	CD073	NOZZLE	37	1	AD1353	CONNECTOR 1-2 NPTM x 1-2 NPTM
16	1	CD963	TOP BLOCK	38	1	PF157	CLEANSWEEP T100 Y EA NPT DRYSPELL
17	1	AD1670	CONTROLLER UL WITH SMPS (MODEL DS31-90)	39	1	AD1674	MOUNTING BRACKET DRYSPELL CONTROLLER WITH SMPS
18	1	AD1374	PRESSURE GAUGE	40	1	CE659	SMPS 24V DC
19	4	AD285	TIE ROD	41	2	CF246	STAR HEAD CAP SCREW M4 x 16 - SS
20	4	CF011	SPRING WASHER M8	42	2	CF325	PLATE WASHER M4 - SS
21	4	CD657	DOOM NUT	43	2	CF348	NUT HEX M4 - SS
22	2	AD1520	EXHAUST VALVE ASSEMBLY				

SPARE KIT

4	AS701	FILTER ELEMENT ASSEMBLY T100Y	CO201	O-RING (62 X 2.4)	2
			CD944	SEAL RUBBER	1
			AC151	FILTER ELEMENT T100Y	1
3	SK278A	SEAL KIT WITH DESICCANT DRYSPELL PLUS 10	SK210A	SEALS AND O-RING SPARE KIT DPS-10	1
			AD827	TOP DIFFUSER SCREEN	2
			DP 072 S-1	DIFFUSER SCREEN	2
			CD067A	ACTIVATED ALUMINA	2.2 KGS
			CC447	MOLECULAR SIEVES	0.8 KGS
			CO009	PLUG O-RING (31.6 X 2.4)	2
2	SK 220 A	EXHAUST VALVE SPARE KIT DPS-10	CO074	SEALING O-RING-1 (6.02 X 2.62)	2
			CO067	SEALING O-RING-2 (10 X 2.62)	2
			CO067	PISTON O-RING-2 (10 X 2.62)	2
			CO002	PISON O-RING-1 (28.17 X 3.53)	2
			AD745	POPPET ASSY	2
			AD548	SPRING COMP.	2
			AG012	GASKET NON-METAL	2
			AD259	RUBBER BALL	2
			SK210A-3	INLET AIR TRANSFER TUBE O-RING (10.6 X 1.83)	4
			SK210A-1	CHAMBER BASE PLUG O-RING (10.0 X 2.62)	2
1	SK210A	SEALS AND O-RING SPARE KIT DPS-10	SK210A-2	CHAMBER BOTTOM NOZZLE O-RING (15.4 X 2.21)	4
			SK212A-4	TOWE SEAL (O-RING 55.4 X 4)	4
			SK212A-3	SHUTTLE	1
			SPARE KIT CONSISTING OF		
ITEM	PART NUMBER	DESCRIPTION			