

FACT SHEET

PRODUCT NAME : DRYSPELL PLUS
MODEL : DRYSPELL PLUS 5
ITEM CODE : PD297 (without Cover & Includes external Pre - Filter)
PD298 (without Cover & without external Pre - Filter)

1. SPECIFICATIONS

Flow	: 5 scfm
Maximum Operating Pressure	: 16 bar (g) (232 PSI (g))
Rated Air Inlet Temperature	: 38 ⁰ C (100 ⁰ F) (ISO:7183-1986 (E)) rated Dewpoint
Rated Operating Pressure	: 7 bar (g) (101.5 PSI (g))
Recommended External Pre-Filter Rating:	0.01 Microns (ISO: 8573-1:2010 (E) Class 1)
Cycle Time	: 4 Minutes
Operating Voltage	: 100-240 VAC 50/60 Hz 1 Ph
Dew Point	: -40 ⁰ C(-40 ⁰ F) PDP (ISO: 8573-1:2010 (E) Class 2)
End Connections	: 1/2" NPT
Purge Loss	: 15±1%
Noise Level	: <70 dBA
Pressure Drop	: <0.3 bar (g) (<4.3 PSI (g))

2. TECHNICAL DATA

2.1 ADSORBER DATA

Type of adsorbent	: Mixed Bed of Activated Alumina & Molecular Sieves
Adsorber Shell	: Aluminum IS 63400
Top & Bottom Block	: Aluminum IS 63400

2.2 PROCESS DATA

Description	Purge Optimizer			
	100%	80%	60%	40%
Cycle Time (min)	4	4	4	4
Drying Time (min)	2	2	2	2
Regeneration Time (Sec)	90	72	54	36
De-pressurization time (sec)	30	48	66	84

3. FILTER DATA

3.1 Standard with all units

Internal Built In After Filter Micron Rating	: 25 Micron (ISO:8573-1:2010 (E) Class 5)
--	---

3.2 Included with Item Code PD204

External Pre-Filter Particle Removal Rating	: 0.01 Micron (ISO:8573-1:2010 (E) Class 1)
Pre- Filter Oil Removal Rating	: 0.01 mg/m ³ (ISO:8573-1:2010 (E) Class 1)
Filtering Media	: Borosilicate Microfiber Glass
Efficiency	: 99.9%

3.3 Optional for all Units

External Post- Filter Particle Removal Rating	: 1 micron (ISO:8573-1:2010 (E) Class 2)
Post-Filter Oil Removal Rating	: 0.5 mg/m ³ (ISO:8573-1:2010 (E) Class 3)

4. ELECTRICAL DATA

Controller	: Custom Made Micro-Processor Based
Make	: Trident
Input Voltage	: 100-240 VAC 50/60 Hz 1 Ph
Output	: 24VDC
Display	: LED Indication for Drying, Re-Pressurization & Drain
Enclosure	: IP55 Protection
Certification	: cUL USA Marking

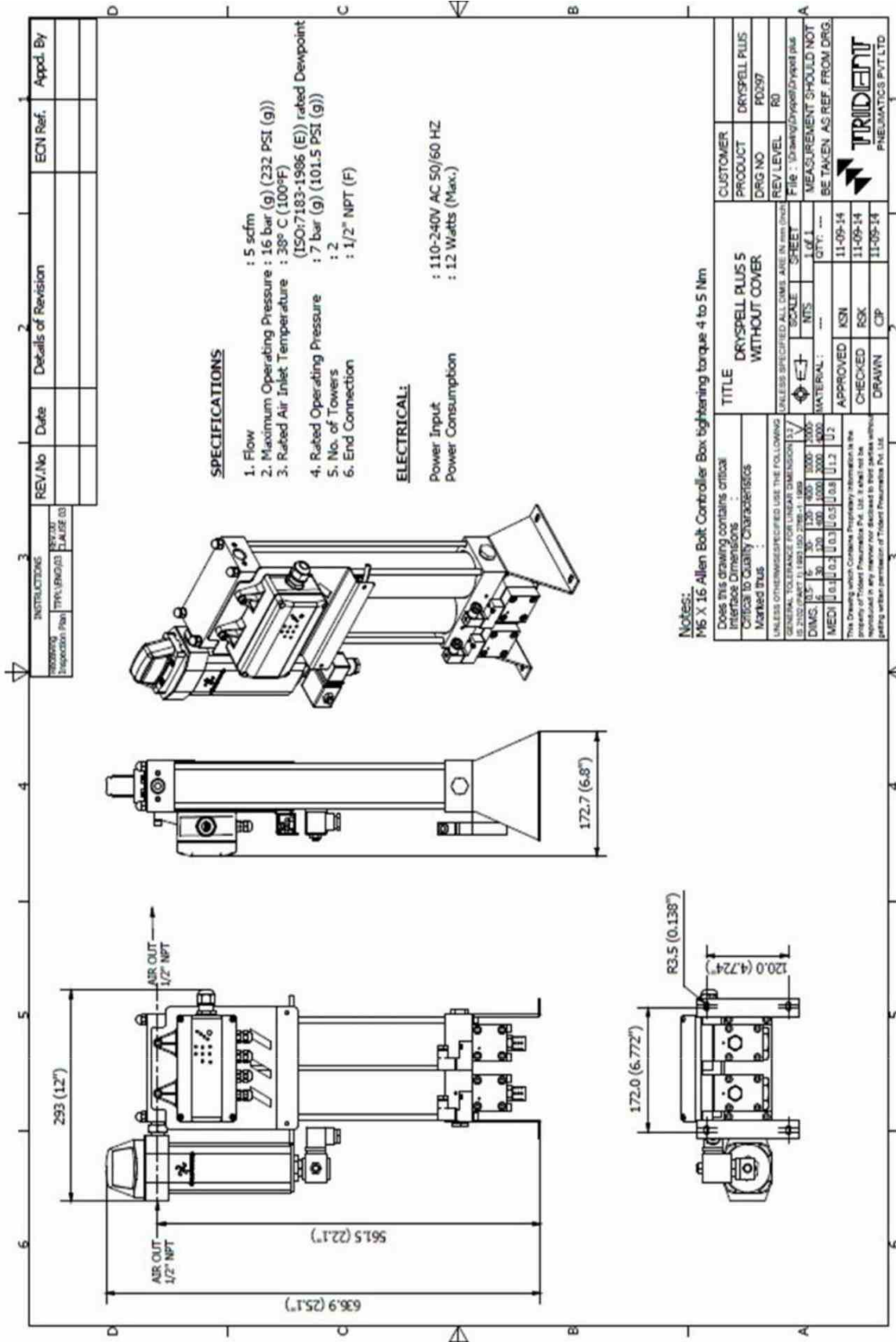
Dew Point Stretch Cycle:

It stretches the moisture loading time of the desiccant bed by increasing the drying time. A dew point meter at the outlet with a required dew point setting provides the signal for the stretch cycle. This reduces the purge air in accordance to the air flow and dewpoint chosen. The purge occurs for the preprogrammed time during this time.

Purge Optimizer:

It reduces the percentage of regeneration flow based on the front panel setting. It has 4 options 40%, 60%, 80% & 100% purge optimization cycles respectively. The settings correspond to flow or moisture load through the dryer.

Separate LED Indicators for Tower Status, Purge Optimizer & Condensate Drain



SPECIFICATIONS

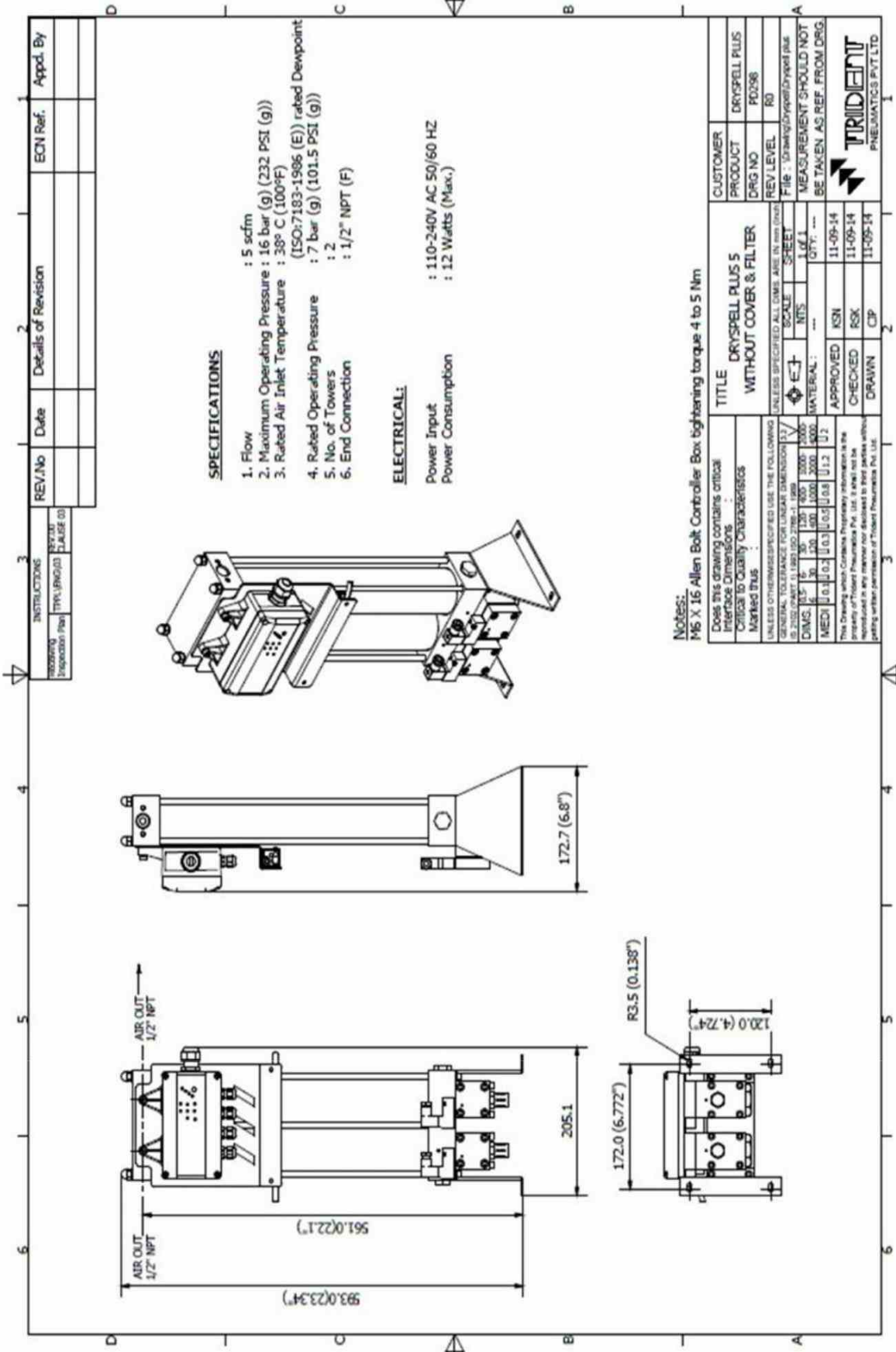
- 1. Flow : 5 scfm
- 2. Maximum Operating Pressure : 16 bar (g) (232 PSI (g))
- 3. Rated Air Inlet Temperature : 38° C (100°F)
(ISO:7183-1986 (E)) rated Dewpoint
- 4. Rated Operating Pressure : 7 bar (g) (101.5 PSI (g))
- 5. No. of Towers : 2
- 6. End Connection : 1/2" NPT (F)

ELECTRICAL:

Power Input : 110-240V AC 50/60 HZ
 Power Consumption : 12 Watts (Max.)

Notes:
 MS X 16 Allen Bolt Controller Box tightening torque 4 to 5 Nm
 Does this drawing contains critical interface Dimensions :
 Marked thus :

UNLESS OTHERWISE SPECIFIED USE THE FOLLOWING GENERAL TOLERANCE FOR LINEAR DIMENSIONS (1/16" MINIMUM)		SCALE		SHEET		CUSTOMER	
FINISH	SCALE	NTS	1:1	1 OF 1	DRYSPELL PLUS	DRY SPELL PLUS	DRY SPELL PLUS
DIMS	16	1:20	1:50	1:100	1:200	1:500	1:1000
DIMS	6	1:20	1:50	1:100	1:200	1:500	1:1000
MEDI	0.1	0.2	0.3	0.5	0.8	1.2	2.0
MATERIAL:		APPROVED		KSN		11-09-14	
CHECKED		RSK		11-09-14		11-09-14	
DRAWN		CP		11-09-14		11-09-14	
TITLE				DRYSPELL PLUS 5 WITHOUT COVER			
CUSTOMER				DRYSPELL PLUS			
PRODUCT				FD397			
REV LEVEL				R0			
FILE				11-09-14			
MEASUREMENT SHOULD NOT				BE TAKEN AS REF. FROM DRG.			



SPECIFICATIONS

- 1. Flow : 5 scfm
- 2. Maximum Operating Pressure : 16 bar (g) (232 PSI (g))
- 3. Rated Air Inlet Temperature : 38° C (100°F)
- 4. Rated Operating Pressure : 7 bar (g) (101.5 PSI (g))
- 5. No. of Towers : 2
- 6. End Connection : 1/2" NPT (F)

ELECTRICAL:

- Power Input : 110-240V AC 50/60 HZ
- Power Consumption : 12 Watts (Max.)

Notes:
 M6 X 16 Allen Bolt Controller Box tightening torque 4 to 5 Nm

Does this drawing contain critical interface dimensions? Critical to quality characteristics Marked thus : *

UNLESS OTHERWISE SPECIFIED USE THE FOLLOWING GENERAL TOLERANCE FOR LINEAR DIMENSION

IS 2002 (PART 1) 1983 (ISO 2768-1:1988)	Tolerance
DIMS	±0.30
FRACTIONS	±0.05
DECIMALS	±0.05
HOLES	±0.08
HOLES	±0.12
HOLES	±0.12

TITLE DRYSPPELL PLUS 5 WITHOUT COVER & FILTER		
CUSTOMER	DRYSPPELL PLUS	ECN Ref.
DRG NO	PD296	Appd. By
REV LEVEL	R0	
SCALE	SHEET	
MATERIAL	---	
APPROVED	KSN	
CHECKED	RSK	
DRAWN	CP	

MEASUREMENT SHOULD NOT BE TAKEN AS REF FROM DRG

TRIDENT
 PNEUMATICS PVT.LTD

